



3VE1



3VE1 protection box



GV2-M



GV2-ME



GV2 protection box



GV3-M



GV3-ME



Application

Motor protection circuit breakers are mainly used for the overload and short circuit protection of the motor in AC 50/60Hz, up to 660V, 0.16-80A power circuit, as a full-voltage starter to start and cut off the motor, under the AC3 load or for the overload and short circuit protection of the circuit and power equipment in the power distribution network.

Specifications

- Setting range

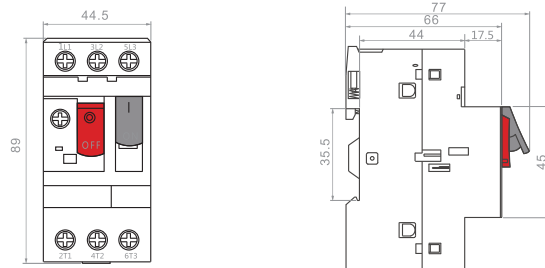
GV2-M/ME: 0.1-0.16A, 0.16-0.25A, 0.25-0.4A, 0.4-0.63A, 0.63-1A, 1-1.6A, 1.6-2.5A, 2.5-4A, 4-6.3A, 6-10A, 9-14A, 10-16A, 13-18A, 17-23A, 20-25A, 24-32A

GV3-M/ME: 6-10A, 10-16A, 14-20A, 16-25A, 25-40A, 40-63A, 56-80A

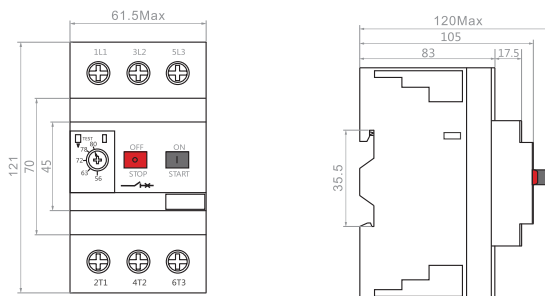
3VE1: 0.1-0.16A, 0.16-0.25A, 0.25-0.4A, 0.4-0.63A, 0.63-1A, 1-1.6A, 1.6-2.5A, 2-3.2A, 2.5-4A, 3.2-5A, 4-6.3A, 5-8A, 6.3-10A, 8-12.5A, 10-16A, 14-20A

Protection boxes are available for GV2 and 3VE1

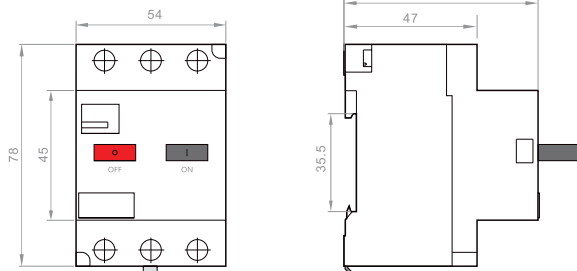
Outer and mount dimension



GV2-M/ME



GV3-M/ME



3VE1