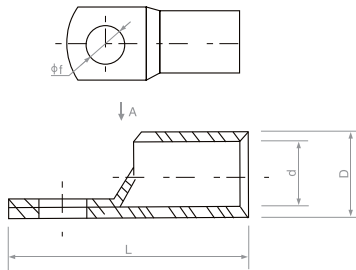




Material: Copper



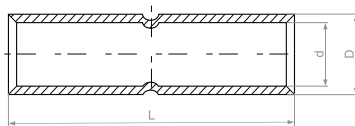
SC(JGK) Cable Lug

Type	Dimensions(mm)				Weight (kg)
	Øf	D	d	L	
SC(JGK)-1.5	4.2, 5.2	3.5	1.8	18	0.0009
SC(JGK)-2.5	4.2, 5.2, 6.2	4	2.5	19	0.0011
SC(JGK)-4	5.2, 6.2	4.8	3.1	21	0.0015
SC(JGK)-6	5.2, 6.2	5.5	3.8	24	0.0022
SC(JGK)-10	6.2, 8.2	6.8	4.8	26	0.0028
SC(JGK)-16	6.2, 8.2	7.5	5.5	30	0.0041
SC(JGK)-25	6.2, 8.2, 10.5, 12.5	9	7	34	0.0064
SC(JGK)-35	8.2, 10.5, 12.5	10.5	8.2	38	0.0097
SC(JGK)-50	8.2, 10.5, 12.5	12.5	9.8	45	0.0153
SC(JGK)-70	10.5, 12.5	14.5	11.5	50	0.0240
SC(JGK)-95	12.5, 16.5	17.5	13.8	55.5	0.0400
SC(JGK)-120	12.5, 16.5	19.5	15.5	63	0.0558
SC(JGK)-150	16.5	21	16.5	71	0.0762
SC(JGK)-185	16.5	23.5	18.8	78	0.0980
SC(JGK)-240	16.5, 20.5	26.5	21	92	0.1510
SC(JGK)-300	16.5, 20.5	30	24	102	0.2530
SC(JGK)-400	16.5, 20.5	34	26.5	113	0.3020
SC(JGK)-500	16.5, 20.5	38	30	123	0.4200
SC(JGK)-630	20.5	45	35	135	0.6560

K



Material: Copper



GTY Copper Connecting Pipe

Type	Dimensions(mm)			Weight (kg)
	D	d	L	
GTY-1.5	3.5	1.8	20	0.001
GTY-2.5	4	2.5	20	0.001
GTY-4	4.8	3.1	20	0.001
GTY-6	5.5	3.8	25	0.002
GTY-10	6.8	4.8	30	0.004
GTY-16	7.5	5.5	35	0.006
GTY-25	9	7	40	0.008
GTY-35	10.5	8.2	45	0.012
GTY-50	12.5	9.8	50	0.019
GTY-70	14.5	11.5	55	0.027
GTY-95	17.5	13.8	60	0.047
GTY-120	19.5	15	65	0.060
GTY-150	21	16.5	70	0.078
GTY-185	23.5	18.5	75	0.101
GTY-240	26.5	21	80	0.137
GTY-300	30	24	85	0.233
GTY-400	34	26.5	90	0.261
GTY-500	38	30	100	0.300
GTY-630	45	35	110	0.360
GTY-800	50	39	150	0.400
GTY-1000	56	44	170	0.455